

Accessories for New Brunswick™ Shakers: Dimensions and Capacities

Applications Training Document, Apr. 2014
For internal and external use

Author Technical Applications, Enfield, USA

Contact **RSCs:** Contact your local Level 2 Application Support Team
Level 2 Support Teams: Contact Enfield Technical Applications Team

Table of Contents

- 1. Platform Dimensions..... 3
- 2. Test Tube Racks 4
- 3. Flask Clamps 5
- 4. Other Accessories 6

1. Platform Dimensions

This table gives the platform dimensions (in inches and centimeters) of all New Brunswick shaker models.

Model		Dimensions (cm)	Dimensions (in)
CO ₂ Incubator Shaker	S41i	61 x 36	24 x 14
Innova® Incubated/Refrigerated	40/40R	46 x 46	18 x 18
	42/42R	46 x 46	18 x 18
	43/43R	76 x 46	30 x 18
	44/44R	76 x 46	30 x 18
I Series	I26/I26R	76 x 46	30 x 18
Excella® Incubated/Refrigerated	E24/E24R	46 x 46	18 x 18
	E25/E25R	76 x 46	30 x 18
Innova® Open-Air	2000	33 x 28	13 x 11
	2050	41 x 31	16 x 12
	2100	46 x 46	18 x 18
	2150	61 x 46	24 x 18
	2300	76 x 46	30 x 18
	2350	91.4 x 61	36 x 24
	5000	82.5 x 68 (up to 6)	32.5 x 26.7 (up to 6)
Excella® Open-Air	E1	33 x 28	13 x 11
	E2	33 x 28	13 x 11
	E5	46 x 46	18 x 18
	E10	76 x 46	30 x 18
Water Bath	Innova® 3100	30.5 x 42	16 x 12
	C76	30.5 x 42	16 x 12

2. Test Tube Racks

The following table gives a list of test tube racks that can be ordered, as well as their dimensions and tube capacities for different test tube sizes.

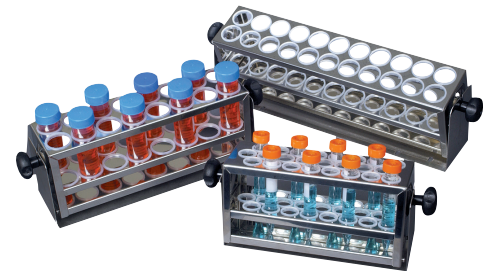
Rack size	Test tube diameter		Tubes/ rack	Order no.	Height		Length		Width		Hole diameter	
	mm	in			mm	in	mm	in	mm	in	mm	in
Small	8-11	0.315-0.433	48	M1289-0001	129	5.08	300	11.8	80	3.2	14	0.551
	12-15	0.472-0.591	34	M1289-0002	129	5.08	300	11.8	80	3.2	18	0.709
	15-18	0.591-0.709	24	M1289-0003	129	5.08	300	11.8	80	3.2	21	0.827
	18-21	0.709-0.827	18	M1289-0004	129	5.08	300	11.8	80	3.2	24.5	0.965
	22-26	0.866-1.02	13	M1289-0005	129	5.08	300	11.8	80	3.2	29.5	1.16
	26-30	1.02-1.18	12	M1289-0006	129	5.08	300	11.8	80	3.2	32.3	1.27
Medium	8-11	0.315-0.433	60	M1289-0010	129	5.08	360	14.2	80	3.2	14	0.551
	12-15	0.472-0.591	44	M1289-0020	129	5.08	360	14.2	80	3.2	18	0.709
	15-18	0.591-0.709	31	M1289-0030	129	5.08	360	14.2	80	3.2	21	0.827
	18-21	0.709-0.827	23	M1289-0040	129	5.08	360	14.2	80	3.2	24.5	0.965
	22-26	0.866-1.02	16	M1289-0050	129	5.08	360	14.2	80	3.2	29.5	1.16
	26-30	1.02-1.18	16	M1289-0060	129	5.08	360	14.2	80	3.2	32.3	1.27
Large	8-11	0.315-0.433	80	M1289-0100	129	5.08	450	17.7	80	3.2	14	0.551
	12-15	0.472-0.591	60	M1289-0200	129	5.08	450	17.7	80	3.2	18	0.709
	15-18	0.591-0.709	42	M1289-0300	129	5.08	450	17.7	80	3.2	21	0.827
	18-21	0.709-0.827	30	M1289-0400	129	5.08	450	17.7	80	3.2	24.5	0.965
	22-26	0.866-1.02	22	M1289-0500	129	5.08	450	17.7	80	3.2	29.5	1.16
	26-30	1.02-1.18	20	M1289-0600	129	5.08	450	17.7	80	3.2	32.3	1.27

Test tube diameter

15 - 18 mm
0.59 - 0.71 in
26 - 30 mm
1.02 - 1.18 in
8 - 11 mm
0.31 - 0.43 in

Tubes (mL)

15 mL conical tube "Falcon"
5 mL Eppendorf tube
50 mL conical tube "Falcon"
1.5 mL Eppendorf safe-lock tube



For model

Excella® E1, E2
Innova® 2000
Innova® 2050
Excella® E5, E24, E 24R
Innova® 40, 40R, 42, 42R, 2100
I Series I24, I24R
Innova® 2150
I Series I26, I26R
I Series I2500, I2500KC
Excella® E10, E25, E25R
Innova® 43, 43R, 2300
Innova® 44, 44R
Innova® 2350
S41i

Dimensions

cm	in
33 x 28	13 x 11
41 x 30	16 x 12
46 x 46	18 x 18
46 x 46	18 x 18
61 x 46	24 x 18
76 x 46	30 x 18
76 x 46	30 x 18
76 x 46	30 x 18
91 x 61	36 x 24
61 x 36	24 x 14

Test tube rack capacity

Small	Medium	Large
3	-	-
4	3	-
5	5	4
5	5	4
8	7	6
9	9	7
9	9	7
9	9	7
18	13	12
6	3	3

3. Flask Clamps

Dimensions

This table gives the exact dimensions of all flasks that New Brunswick manufactures. This information can be useful for calculating how many flask clamps can fit on a given platform. These were compiled from engineering drawings.



Clamp size	Order no.	Bottom radius		Diameter		Height	
		mm	in	mm	in	mm	in
10 mL Erlenmeyer	ACE-10S	15.47	0.609	30.94	1.22	26.34	1.04
25 mL Erlenmeyer	M1190-9004	19.05	0.75	38.1	1.5	21.41	0.843
50 mL Erlenmeyer	M1190-9000	25.4	1	50.8	2	25.6	1.01
125 mL Erlenmeyer	M1190-9001	32.89	1.295	65.79	2.59	36.32	1.43
250 mL Erlenmeyer	M1190-9002	39.5	1.56	78.99	3.11	48.41	1.91
500 mL Erlenmeyer	M1190-9003	50.11	1.97	100.2	3.94	51.71	2.04
1 L Erlenmeyer	ACE-1000S	60.07	2.36	120.1	4.73	62.99	2.48
2 L Erlenmeyer	ACE-2000S	75.87	2.99	151.7	5.97	70.99	2.79
2 L Lauber Thompson	M1190-9005	84	3.31	168	6.61	112	4.41
2.8 L Fernbach	ACFE-2800S	99.21	3.91	198.4	7.81	65.63	2.58
3 L Erlenmeyer	ACE-3000S	94.5	3.72	189	7.44	128	5.04
4 L Erlenmeyer	ACE-4000S	98.02	3.86	196	7.72	95.25	3.75
5 L Erlenmeyer	ACE-5000S	111	4.37	222	8.74	145	5.71
6 L Erlenmeyer	ACE-6000S	112.7	4.44	225.4	8.87	95.63	3.76
500 mL Media Bottle	ACSB-500S	54.76	2.16	109.5	4.31	107.9	4.25
1 L Media Bottle	ACSB-1000S	64.62	2.54	129.2	5.09	146.1	5.75

Flask clamp capacity for universal and dedicated platforms

The following table shows the flask clamp capacity for universal and dedicated platforms for different shakers. Not all shakers are listed; the rest can be found online or in the catalog.

	S41i		Innova® 40/ Excella® E24		Innova® 42		Innova® 43/ Excella® E25		Innova® 44		I Series I26	
	D	U	D	U	D	U	D	U	D	U	D	U
Dedicated Platform (D)												
Universal Platform (U)												
10 mL Erlenmeyer	-	-	-	109	-	109	-	183	-	187	-	187
25 mL Erlenmeyer	-	-	-	64	-	64	-	92	-	93	-	93
50 mL Erlenmeyer	-	-	64	45	64	45	108	92	-	91	108	93
125 mL Erlenmeyer	32	20	34	21	34	21	60	39	60	39	60	39
250 mL Erlenmeyer	24	16	25	18	25	18	40	30	40	30	40	30
500 mL Erlenmeyer	15	12	16	14	16	14	24	18	24	24	24	24
1 L Erlenmeyer	11	10	9	8	9	8	15	12	15	14	15	12
2 L Erlenmeyer	6	4	5	5	5	5	12	8	12	8	12	8
2 L Lauber Thompson	-	4	-	5	-	5	-	8	-	8	-	8
2.8 L Fernbach	3	3	4	4	4	4	6	6	6	6	6	6
3 L Erlenmeyer	-	3	-	4	-	4	-	6	-	6	-	6
4 L Erlenmeyer	3	3	-	-	4	4	6	6	6	6	-	-
5 L Erlenmeyer	-	-	-	-	-	4	-	6	-	6	-	-
6 L Erlenmeyer	-	-	-	-	-	2	4	4	-	-	-	-
500 mL Media Bottle												
1 L Media Bottle												

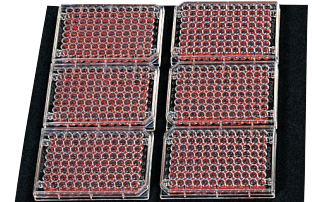
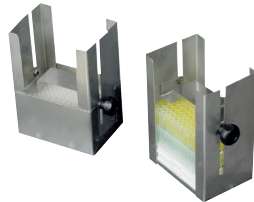
4. Other Accessories

Other accessories dimensions

Description	Order no.	Dimensions (cm)	Dimensions (in)
Sticky Tape	M1250-9600	1058 x 4	416.6 x 1.6
Sticky Pad	M1250-9700	20.3 x 20.3	8 x 8
Sticky Pad platform	Depends on shaker (in catalog)	Entire platform	Entire platform
Utility trays	Depends on shaker (in catalog)	Entire platform	Entire platform
Utility carriers	Depends on shaker (in catalog)	Entire platform	Entire platform
Microplate rack (stack)	M1289-0700	13.1(h) x 9.0(w) x 18.0(d)	5.16(h) x 3.54(w) x 7.09(d)
Microplate rack (1 layer)	TTR-221	45.7 x 13.5	18 x 5.31

Other accessories order numbers

For model	Dimensions		Sticky platform order no.	Utility tray order no.	Utility carrier order no.
	cm	in			
Excella® E1, E2 Innova® 2000	33 x 28	13 x 11	None	AG2-00	AG2-UT
Innova® 2050	41 x 30	16 x 12	None	M1190-9908	M1190-9907
Excella® E5, E24, E24R Innova® 40, 40R, 42, 42R, 2100	46 x 46	18 x 18	M1250-9903	M1194-9910	M1194-9909
I Series I24, I24R	46 x 46	18 x 18	M1250-9903	M1194-9910	None
Innova® 2150	61 x 46	24 x 18	None	M1194-9922	M1194-9921
I Series I26, I26R	76 x 76	30 x 18	M1324-9911	None	None
I Series I2500, I2500KC Excella® E10, E25, E25R Innova® 43, 43R, 2300	76 x 46	30 x 18	M1250-9904	AG-00	Utility Basket ONLY for Innova 43 and 43R: M1320-0700 (No utility carriers offered for these models)
Innova® 44, 44R	76 x 46	30 x 18	M1282-9913	None	None
Innova® 2350	91 x 61	36 x 24	None	AG-21-00	None



Your local distributor: www.eppendorf.com/contact
 Eppendorf AG • 22331 Hamburg • Germany
eppendorf@eppendorf.com

www.eppendorf.com